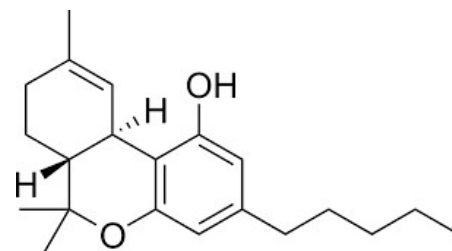


Detecting: Tetrahydrocannabinol (THC)

The principal psychoactive constituent of cannabis/marijuana.



Issue: Small molecule assays usually produce a positive test outcome with a faint or negative read (no test line = positive test). To a user, this is counter-intuitive and can lead to misinterpreted results.

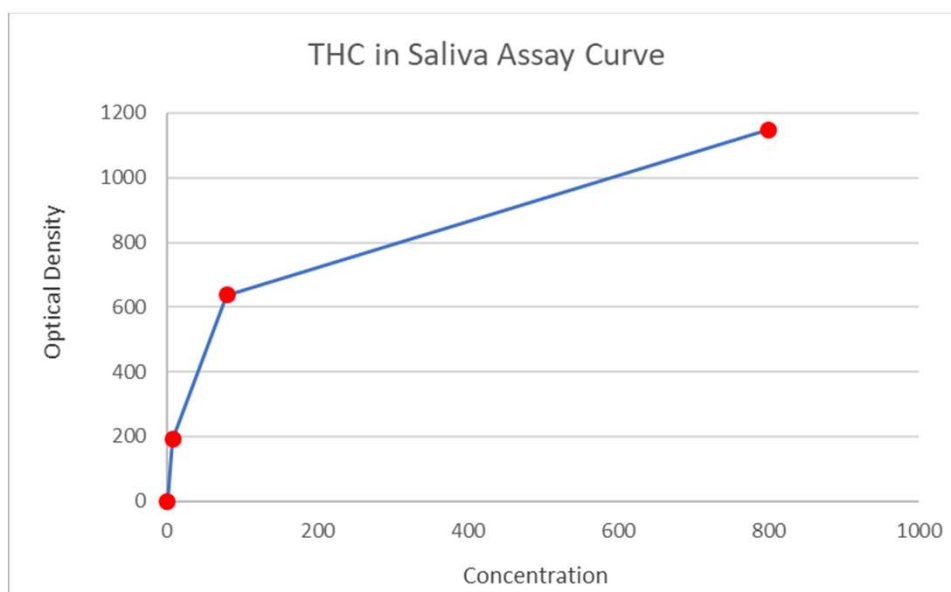
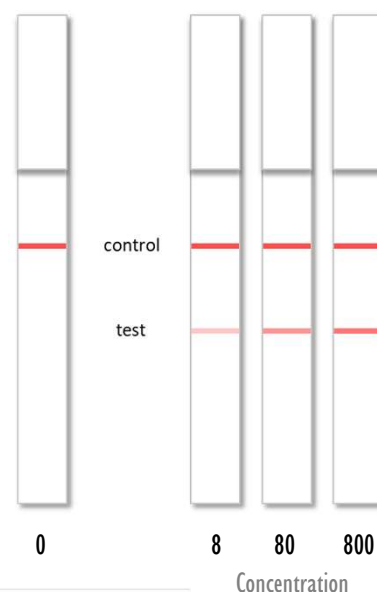
Producing a positive read assay provides a clear positive/negative indication and the optical density of the test line can also indicate the concentration strength of the sample.

Objective: Improve accuracy and convenience by producing clear, positive read assays.

Sample: Saliva

Result: The assay curve demonstrates the degree of sensitivity that we could achieve using our techniques, chemistry and materials.

Even at low levels of concentration, we were able to produce a clear positive read extremely strong results with greater concentrations.



Applications: Law enforcement. Industry.